



## Pierce Low Profile Wrap PRCL Series

### Features

This low profile, clean appearance, surface mounted wrap provides high light levels with a smooth white lens. It can be used in various residential applications. Fixture mounts to standard junction box (not included). It can be used in various commercial and residential applications.

### Construction

Housing is die-formed of 22-gauge steel. Power supply connections must be made inside the junction box.

### Finish

Housing is finished in lighting grade white baked gloss enamel paint.

### Diffuser

Acrylic diffuser is .05" thick white sheet.

### Electrical

This unit is wired with a constant current low voltage electronic LED driver rated for 120-277V compatible with residential (TRIAC/ELV) and commercial (0-10V) dimmers TRIAC and ELV dimming only at 120VAC. Not compatible with dimming controls.

### Lamping

Fixture includes LED modules capable of producing 5000 source lumens:

23W = 2500 source lumens

50W = 5000 source lumens

Adjustable choice 2700K, 3000K, 3500K, 4000K, 5000K (CCT)

Rated for 50,000 Hrs., 90 CRI.

### Certification

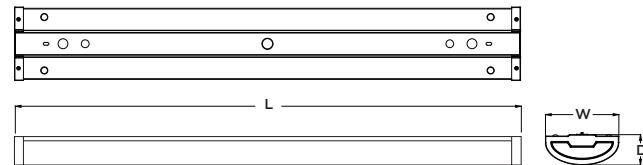
cETLus listed

Title 24/JA8 Compliant

### Warranty

Limited warranty: This fixture is free from defects in materials and workmanship for a period of 5 years from date-of-purchase.

Specifications and dimensions subject to change without notice.



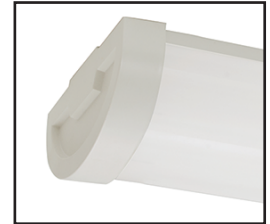
## Ordering Information:

White	LED	Source Lumens	Adjustable CCT	L	W	D
PRCL240750LAJUDWH	23W	2500	2700K/3000K/3500K/4000K/5000K	24"	6-1/2"	2-3/4"
PRCL450750LAJUDWH	50W	5000	2700K/3000K/3500K/4000K/5000K	44-7/8"	6-1/2"	2-3/4"

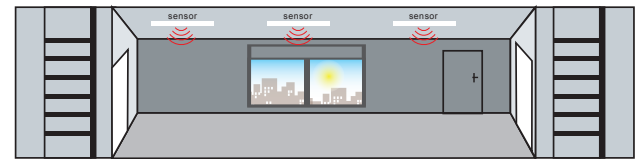
LOCATION		DATE
PREPARED BY		QUANTITY
COMMENTS		FIXTURE TYPE
CATALOG NUMBER		



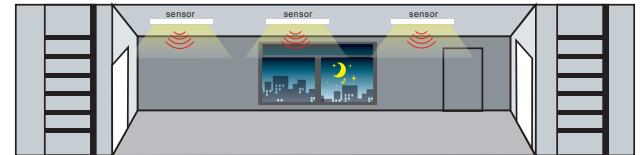
**Limited Quantities Remain.  
Consult Factory.**



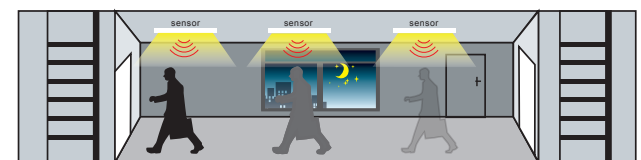
When sufficient light, the fixtures will not switch on.



When insufficient light, the fixtures turn on at desired dimming level (10% - 50%).



When motion is detected, fixtures switch to full light output.



After standby period of no motion, fixtures return to desired dimming level (10%-50%).

